



# Radiography

Sara Riddell  
Superintendent Radiographer  
University Hospital Hairmyres

# Who Are We?



## **RADIOLOGIST**

Doctor who has specialised in the diagnosis and treatment of patient's using medical imaging

## **DIAGNOSTIC RADIOGRAPHER**

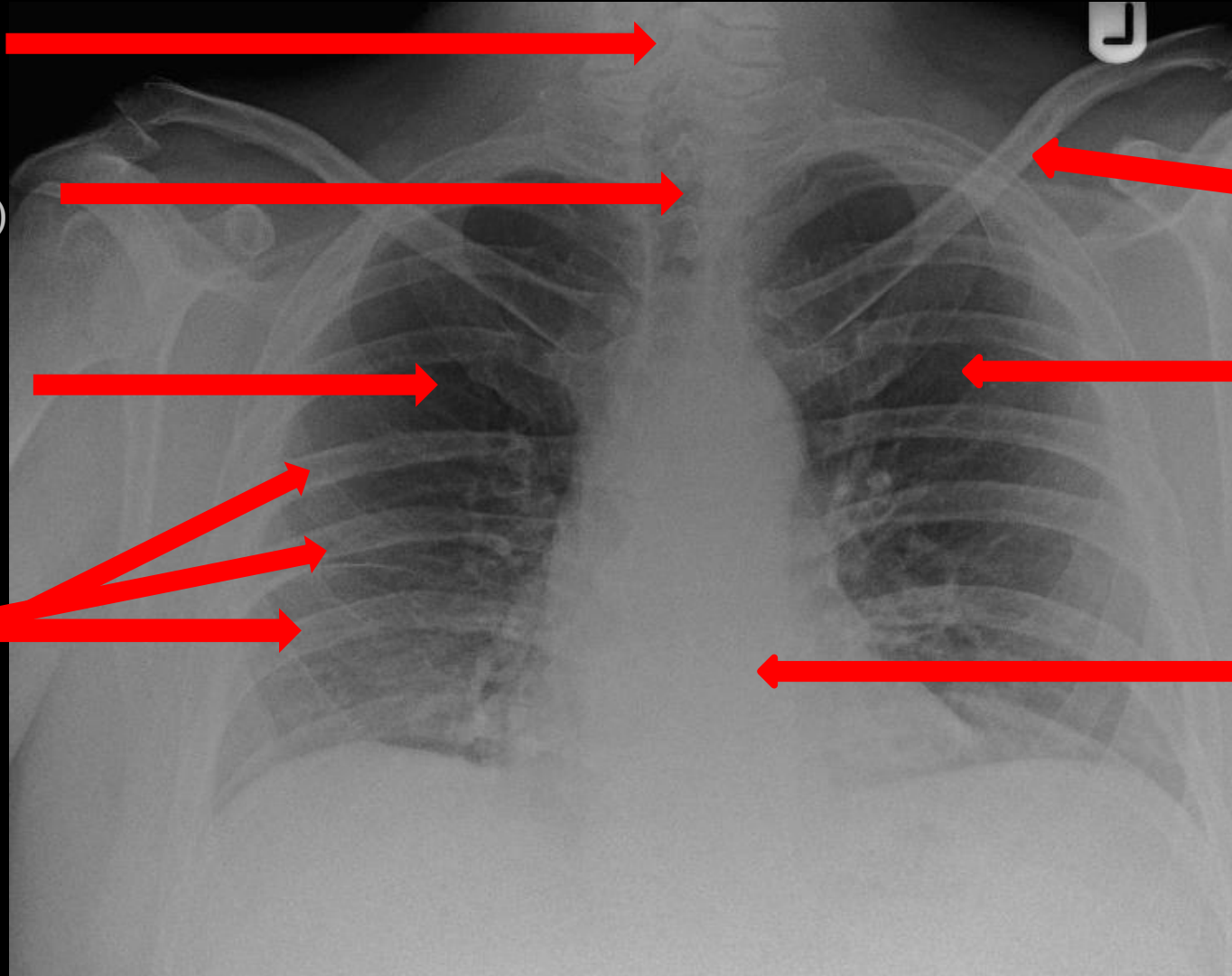
Healthcare professional who specialises in the imaging of human anatomy for the diagnosis and treatment of patient's

# OPEN

*for Business*

Radiographers/Radiologists provide an  
imaging service within the hospital  
24 hours a day/ 7 days a week / 365 days a year

# CHEST XRAY



spine



trachea  
(windpipe)



lungs



clavicle  
(collarbone)



lungs



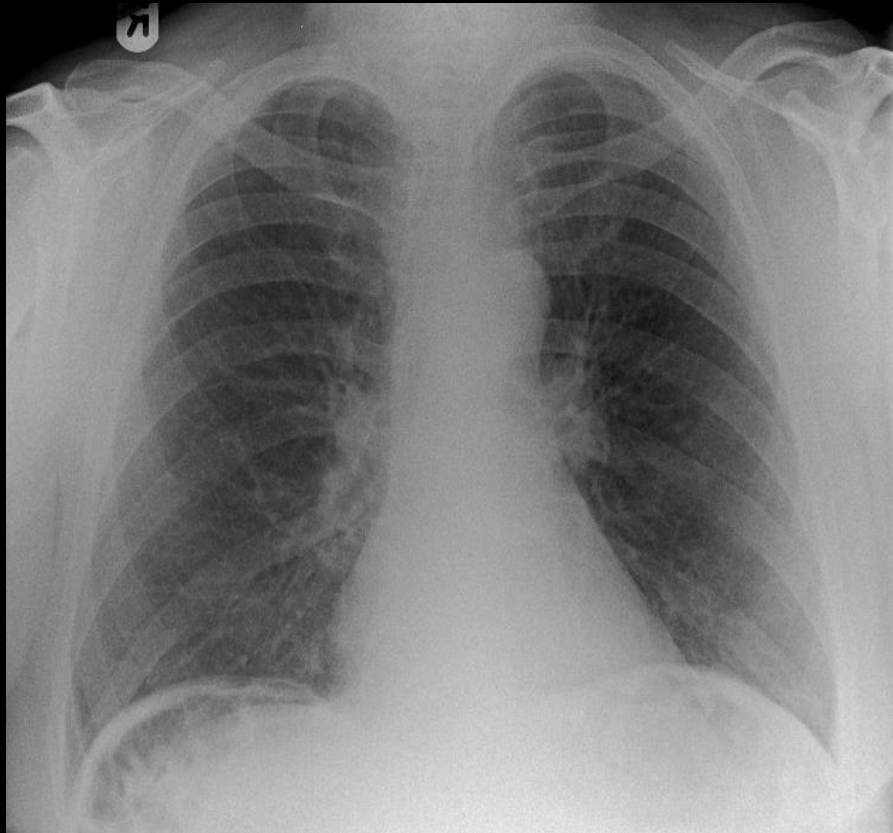
ribs



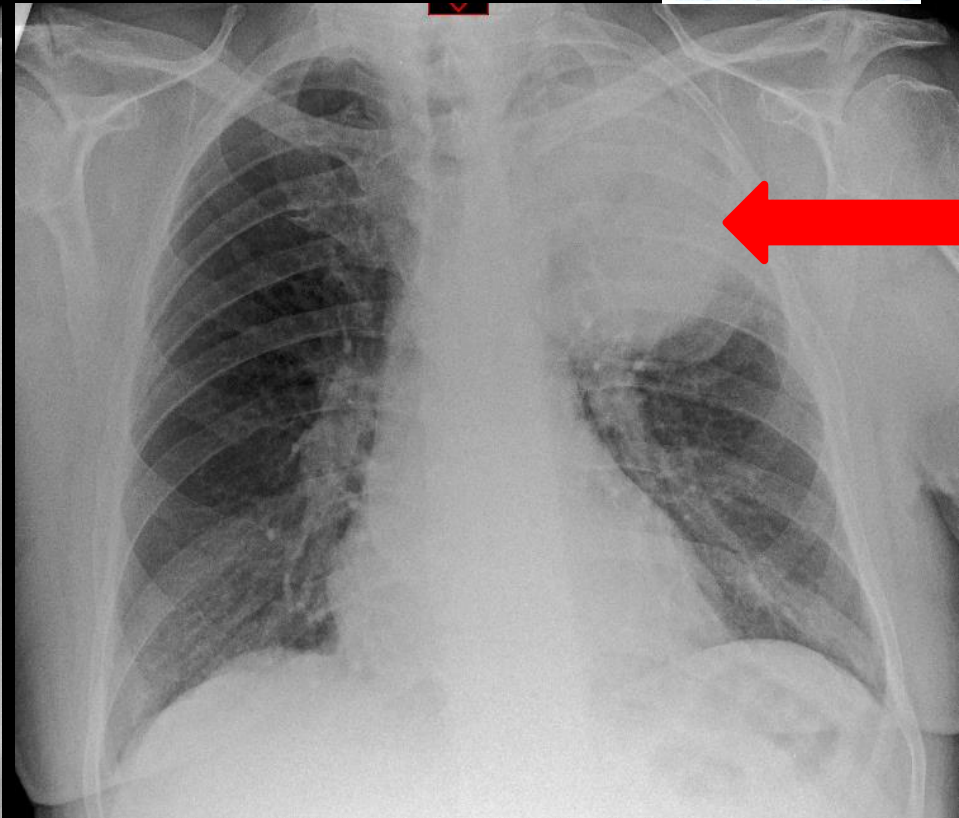
heart



# CHEST XRAY



NORMAL



ABNORMAL

This patient was discovered to have lung cancer

# Size doesn't matter!



Premature Baby x-rayed in our neonatal unit

# Trauma Imaging

## ANKLE XRAY

Do you think it is  
broken?



X-ray's are also taken during surgery  
in theatre to fix broken bones

# Trauma Imaging WRIST XRAY



NORMAL



FRACTURED



IN PLASTER CAST



# Trauma Imaging ELBOW XRAY



Dislocated elbow



Relocated elbow

**Different imaging modalities  
can be used  
to view the same area of the body.**

**The Radiologist will decide which  
modality to use for each patient**

# CT Scanner \_ Polo Mint!



# MRI Scanner\_ Tube!



# Lumbar Spine



XRAY

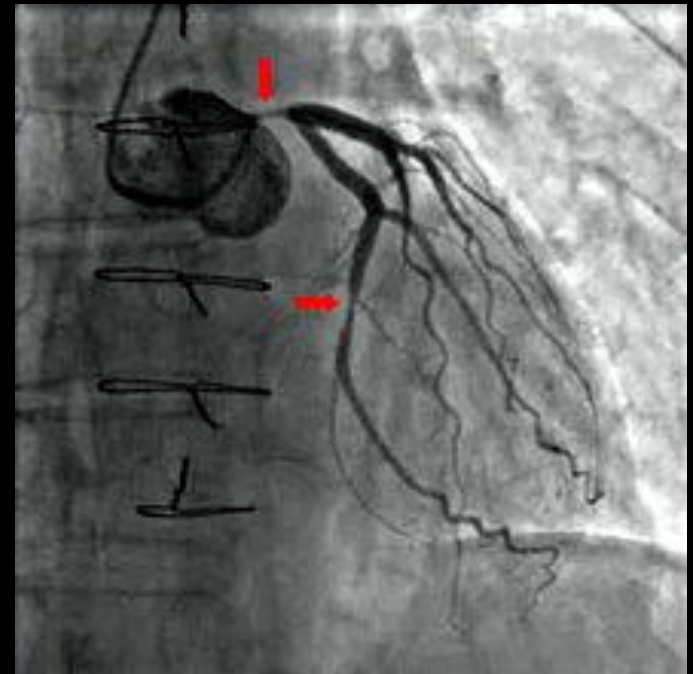
MRI

CT

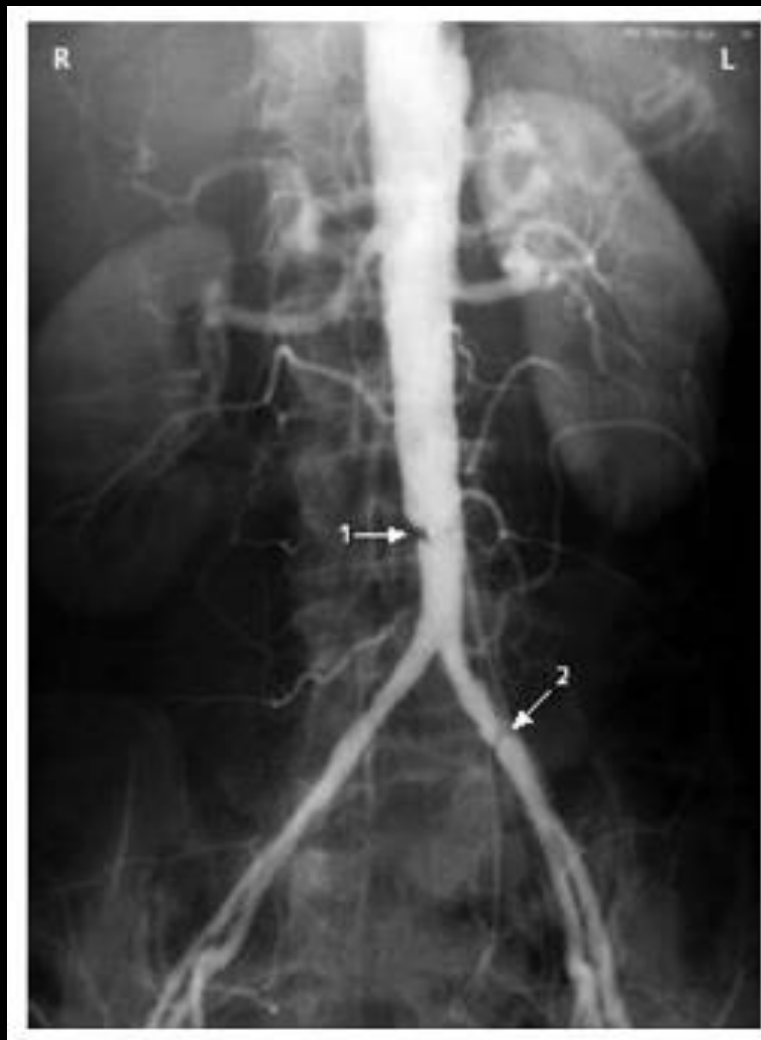
# Ultrasound



# Cardiac cath Lab



# Interventional radiology





# Radiographers are well regulated

- Health care professions Council
- 4 year undergraduate university course to BSc (Hons) level
- Strict radiation guidelines for radiation workers

# School

- Attributes- kind, caring, compassionate ,likes a challenge, like technology, practical, good with their hands rather than sitting at a desk
- Subjects – Physics, Biology or Human Biology

# BSc (Hons) Diagnostic Imaging

- Glasgow Caledonian University
- Robert Gordon university (Aberdeen)
- Queen Margaret University (Edinburgh)
  
- Numerous in England
  
- Entry requirements vary

GCU



- **SQA Higher : BBBB** including English and two sciences, plus Nat 5 Maths at B

# RGU



- **SQA Higher:** BBBC to include English (or a written subject requiring the use of English) and two from Biology/Human Biology, Chemistry, Maths and Physics.

# QMU



- **SQA Higher: BBBC** One science at Higher or equivalent. English plus two sciences at National 5 or Intermediate 2.

# Pay

- Agenda for Change payscale Band 5-8c (£23,113 - £72,675)
- Entry level newly qualified band 5
- Career progression through to band 8c
- Advanced practice
- Reporting Radiographers
- Superintendent Radiographer
- Consultant Radiographers
- Service Managers

# Further information

- <https://www.sor.org/about-radiography/career-radiography>
- <https://www.hcpc-uk.org/public/>
- <https://www.gov.uk/government/publications/ionising-radiation-medical-exposure-regulations-2017-guidance>
- <http://www.hse.gov.uk/radiation/ionising/index.htm>